



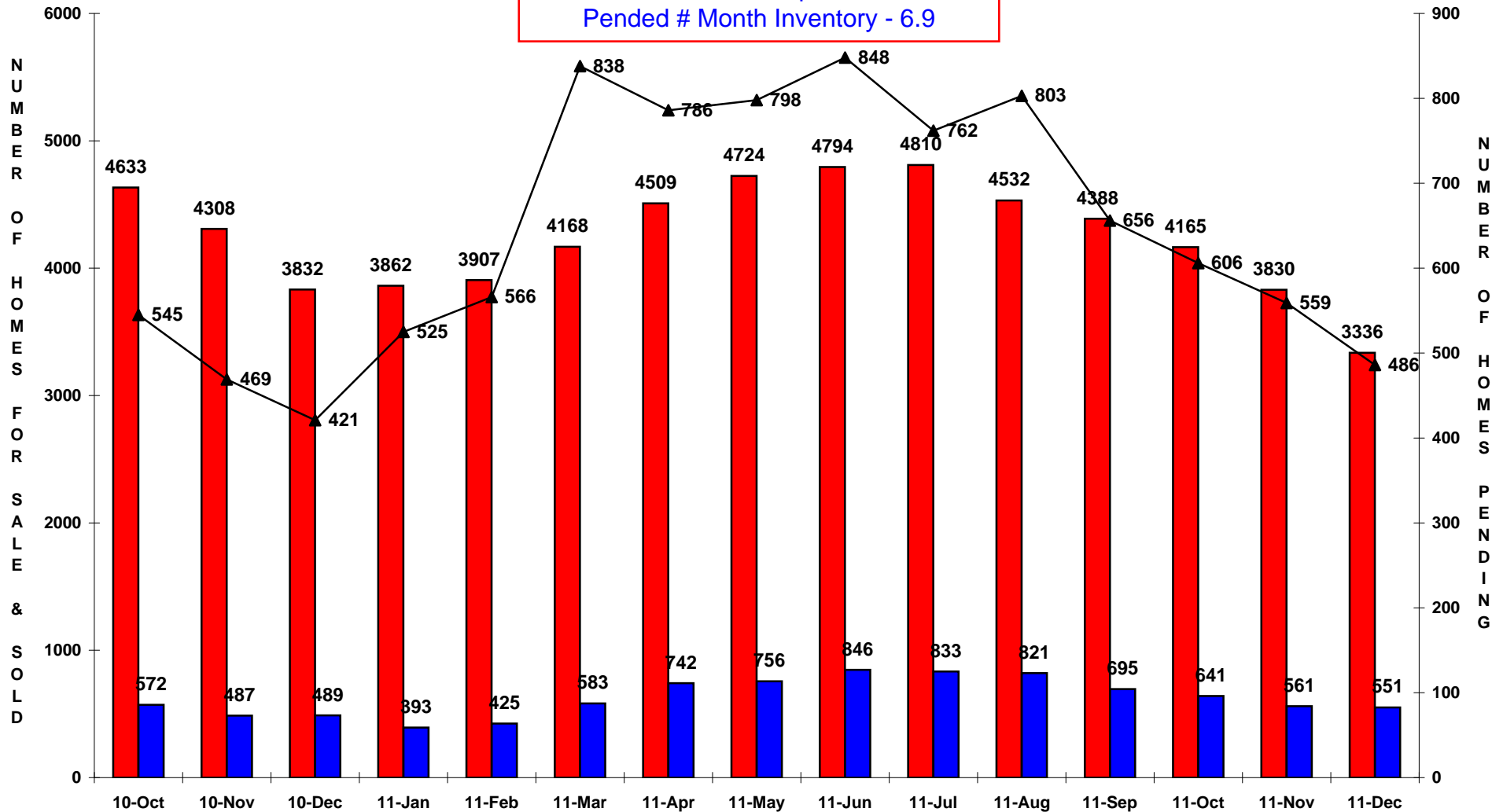
OMAHA MLS - RESIDENTIAL

(single family, detached, exclude new construction & condos)

THE POWER TO PERFORM.

For Sale Sold Pended

December 2010 - December 2011
 FOR SALE - down 13%
 CLOSED - up 13%
 PENDING - up 15%
 Pended # Month Inventory - 6.9



All reports presented are based on data supplied by the Council Bluffs IA Association of Realtor and Great Plains Realtors/Omaha Area BOR or their MLSs. Neither the Associations nor their MLSs guarantee or are in anyway responsible for their accuracy. Data maintained by the Associations or their MLSs may not reflect all real estate activities in the market. Information deemed reliable but not guaranteed.



OMAHA MLS - CONDO

(all condos attached, detached, new, existing)

■ For Sale
 ■ Sold
 ▲ Pended

THE POWER TO PERFORM.

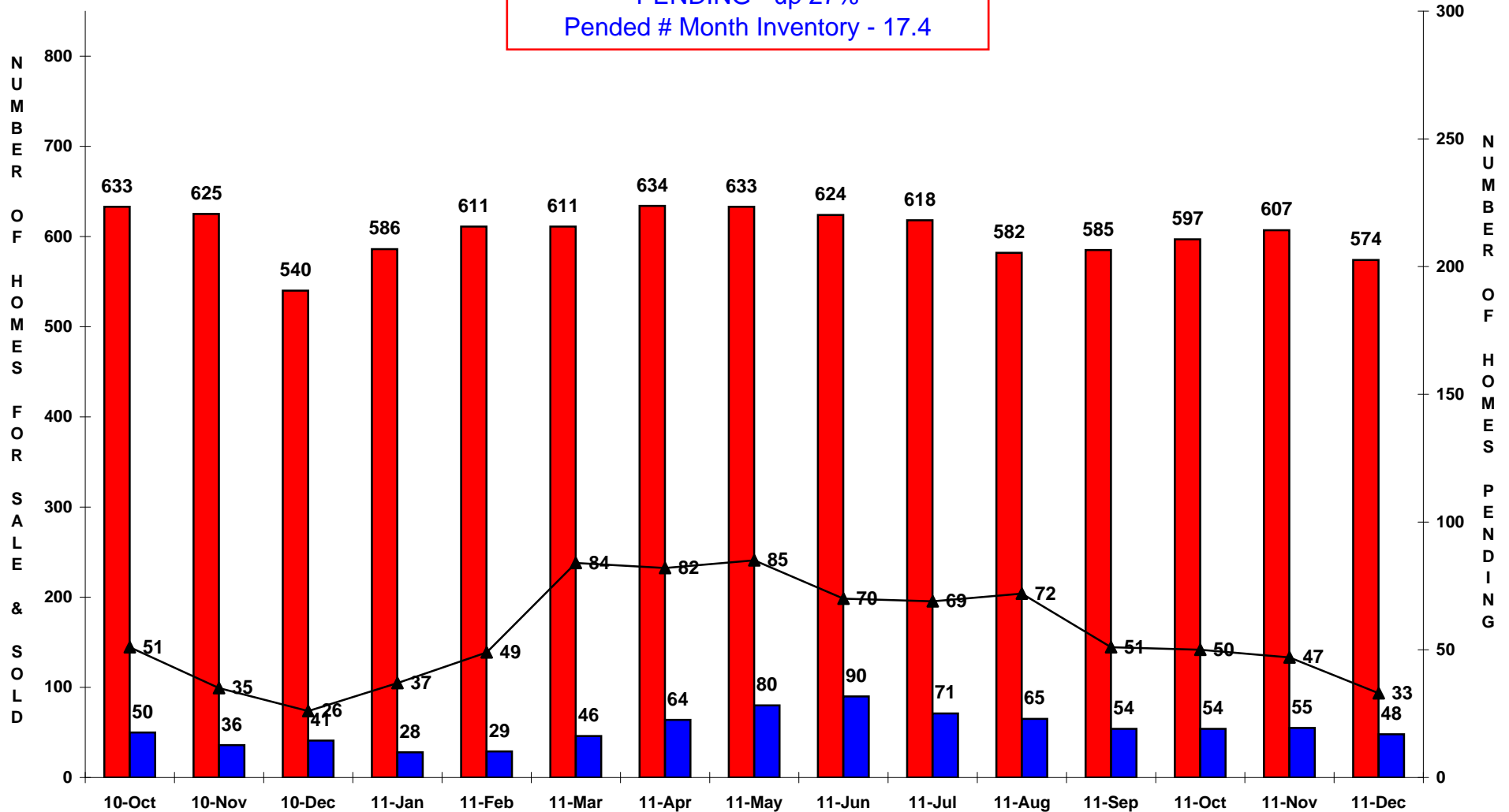
December 2010 - December 2011

FOR SALE - up 6%

CLOSED - up 17%

PENDING - up 27%

Pended # Month Inventory - 17.4



All reports presented are based on data supplied by the Council Bluffs IA Association of Realtor and Great Plains Realtors/Omaha Area BOR or their MLSs. Neither the Associations nor their MLSs guarantee or are in anyway responsible for their accuracy. Data maintained by the Associations or their MLSs may not reflect all real estate activities in the market. Information deemed reliable but not guaranteed.

COPYRIGHT© TRENDGRAPHIX, Inc.



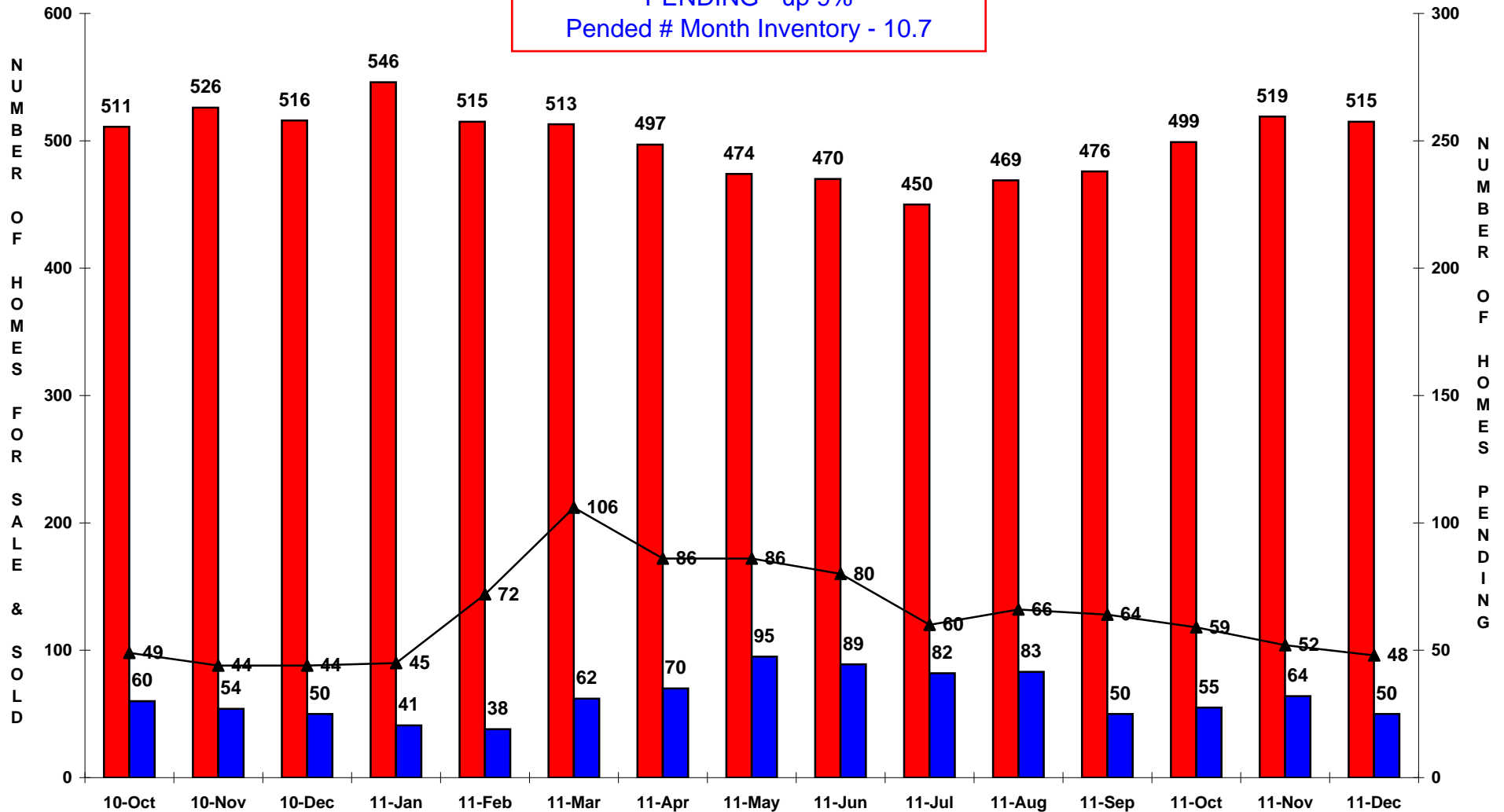
OMAHA MLS - NEW CONSTRUCTION

(residential, single family, detached, exclude condos)

For Sale Sold Pended

December 2010 - December 2011
 FOR SALE - even
 CLOSED - even
 PENDING - up 9%
 Pended # Month Inventory - 10.7

THE POWER TO PERFORM.



All reports presented are based on data supplied by the Council Bluffs IA Association of Realtor and Great Plains Realtors/Omaha Area BOR or their MLSs. Neither the Associations nor their MLSs guarantee or are in anyway responsible for their accuracy. Data maintained by the Associations or their MLSs may not reflect all real estate activities in the market. Information deemed reliable but not guaranteed.



OMAHA MLS - TOTAL MARKET

(residential, single family, detached, attached, new construction, existing, condos)

For Sale Sold Pending

December 2010 - December 2011

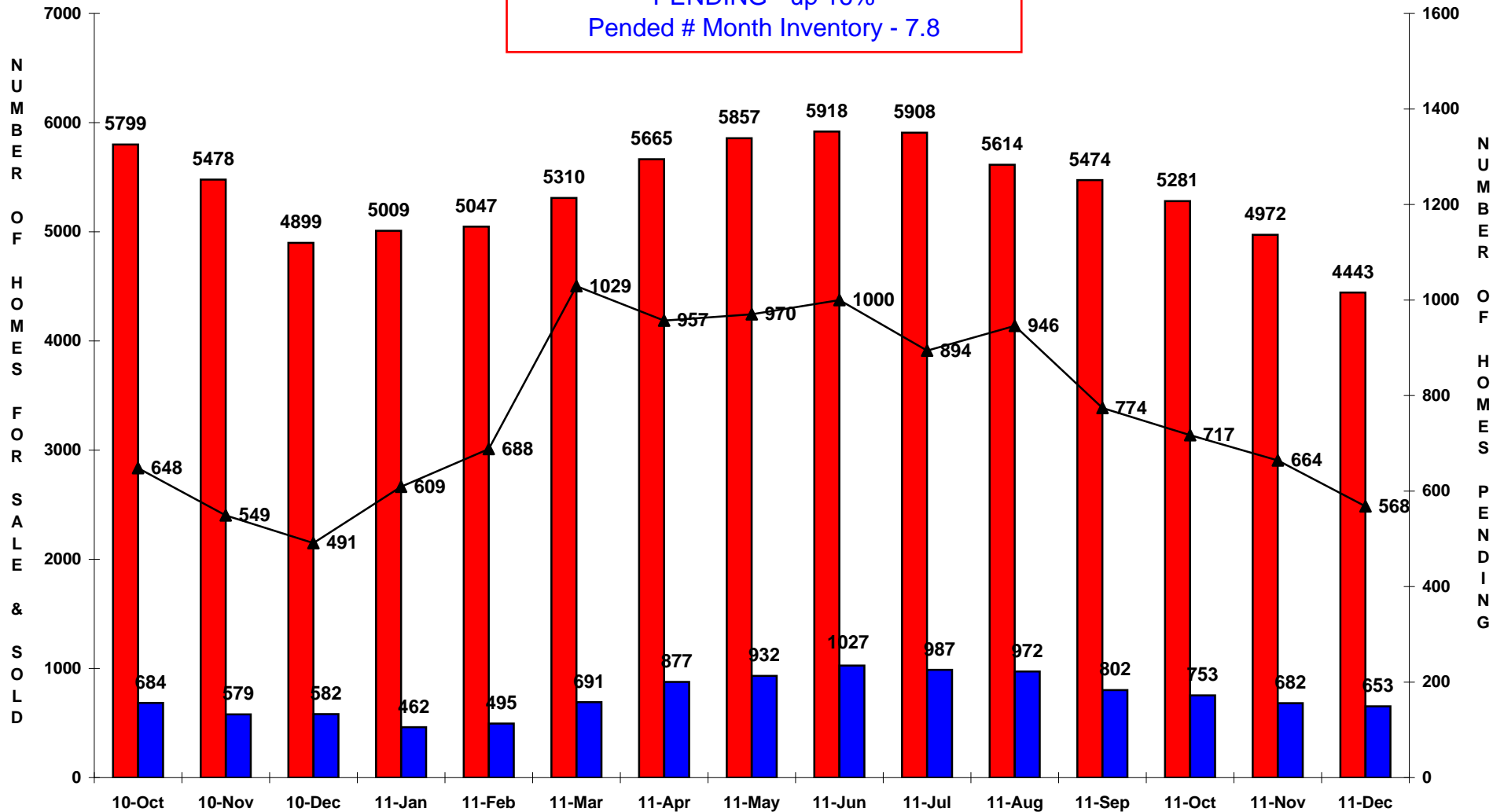
FOR SALE - down 9%

CLOSED - up 12%

PENDING - up 16%

Pended # Month Inventory - 7.8

THE POWER TO PERFORM.



All reports presented are based on data supplied by the Council Bluffs IA Association of Realtor and Great Plains Realtors/Omaha Area BOR or their MLSs. Neither the Associations nor their MLSs guarantee or are in anyway responsible for their accuracy. Data maintained by the Associations or their MLSs may not reflect all real estate activities in the market. Information deemed reliable but not guaranteed.

COPYRIGHT© TRENDGRAPHIX, Inc.